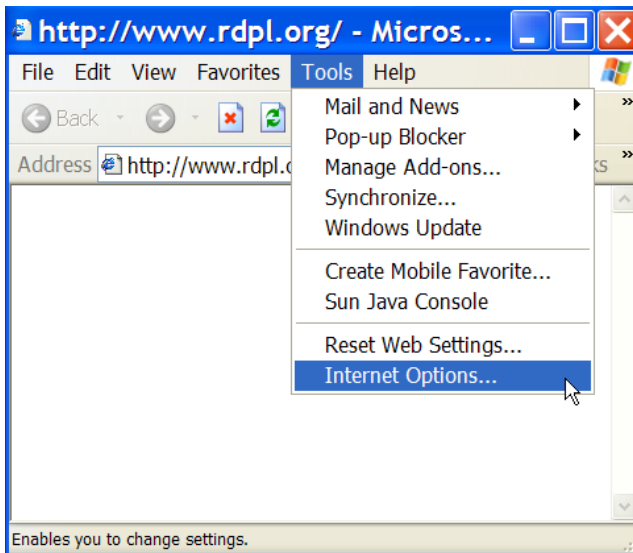


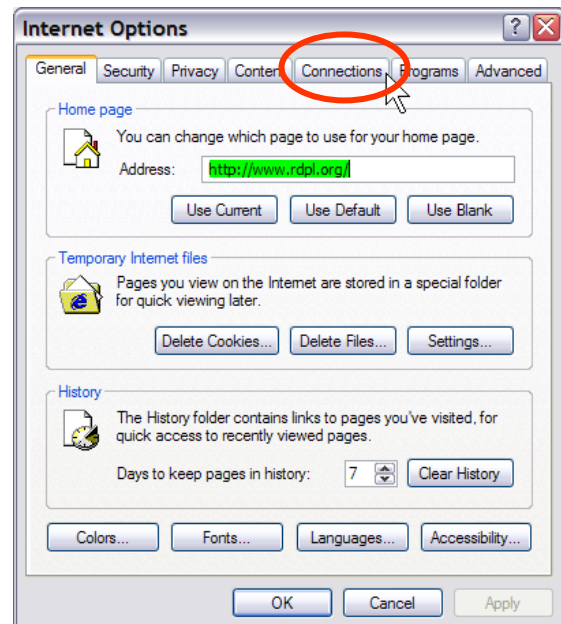
The RDPL / Telebyte Wireless Network is an open network, meaning that no authentication is required. It broadcasts **RDPL** as the SSID of the network and uses DHCP to assign users an IP address on the network. Please make sure that you have connected to the **RDPL** network before continuing any further.

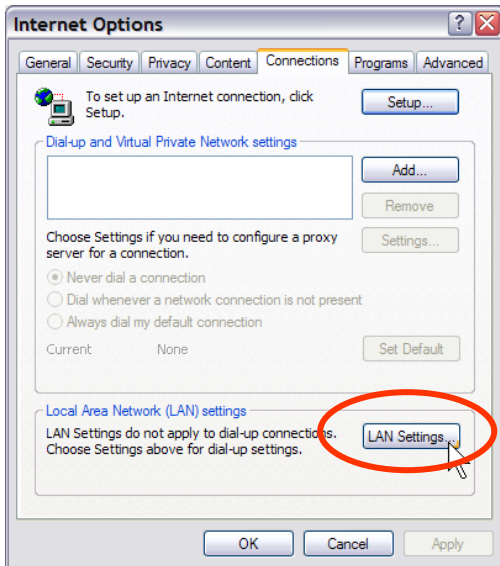
In order to connect to the RDPL / Telebyte Wireless Network, you will need to configure Internet Explorer to use the library's proxy server. To do so, take the following steps:



1. Open up Internet Explorer. Click on **Tools** and then **Internet Options**.

2. Once the Internet Options box pops up, click on the **Connections** tab.





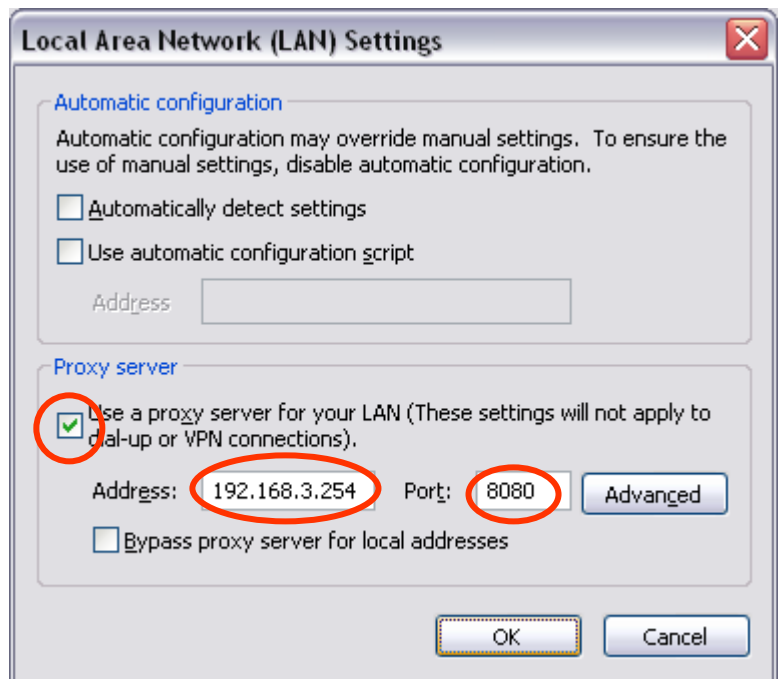
3. Click on the LAN Settings button.

4. Click on the little box next to "Use a proxy server for your LAN..."

5. In the Address box, type: 192.168.3.254

6. In the Port box, type: 8080

7. Click on OK.



8. Click on OK again. You should now be able to access the web.

