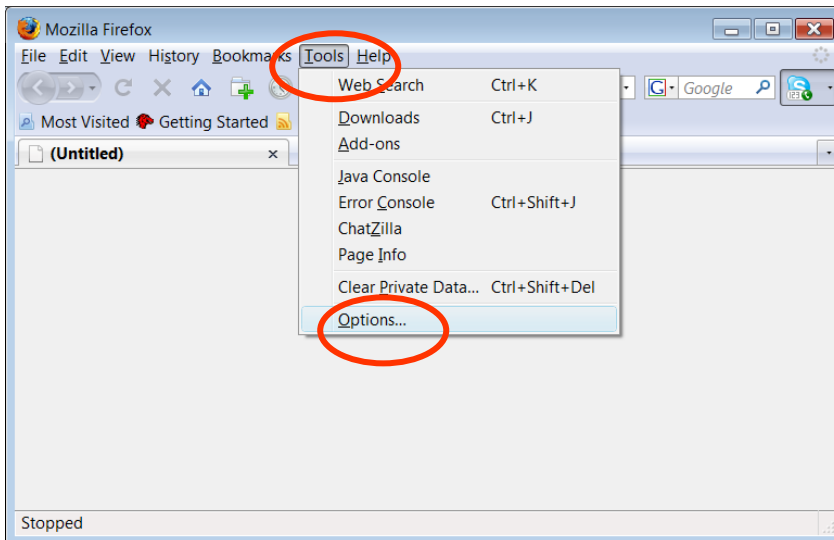


The RDPL / Telebyte Wireless Network is an open network, meaning that no authentication is required. It broadcasts **RDPL** as the SSID of the network and uses DHCP to assign users an IP address on the network. Please make sure that you have connected to the **RDPL** network before continuing any further.

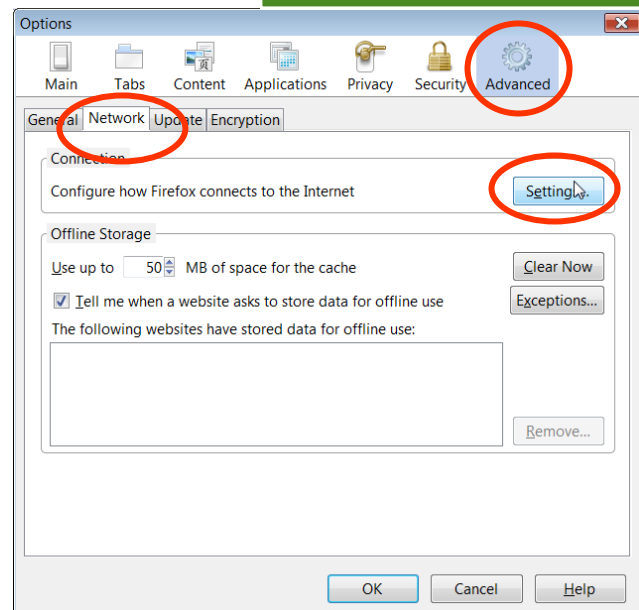
In order to connect to the RDPL / Telebyte Wireless Network, you will need to configure Firefox to use the library's proxy server. To do so, take the following steps:



1. Open up Firefox.
Click on **Tools**
and then **Options**.

(If you use a Mac,
click on **Firefox**
and then **Preferences**.
If you use Linux,
click on **Edit**
and then **Preferences**.)

2. Once the Options box pops up, click on the **Advanced** button. Next click on the **Network** tab. Once the tab opens, click on the **Settings** button.



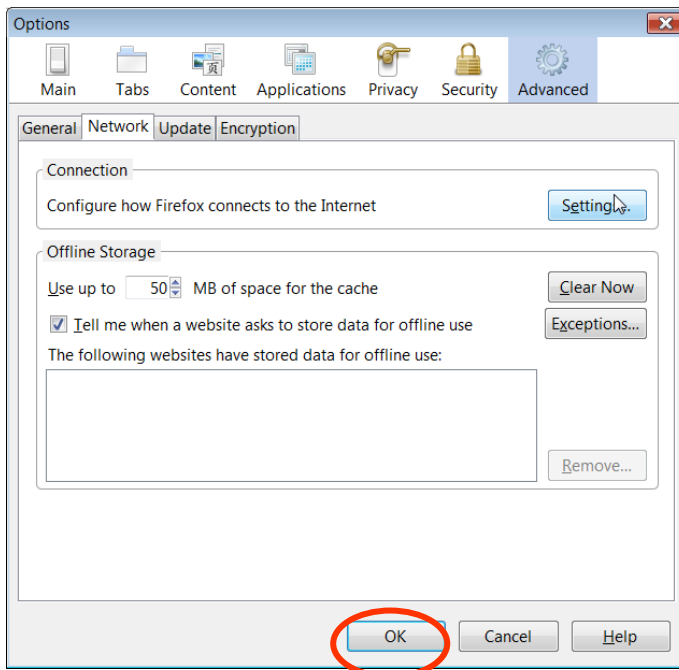
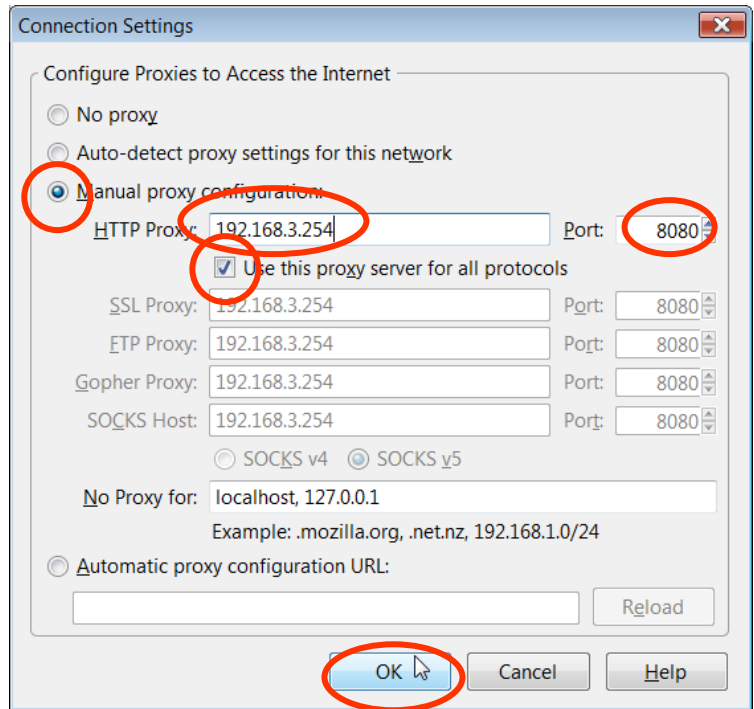
3. Click on the radio button next to “Manual proxy configuration.”

4. In the **HTTP Proxy:** box, type: **192.168.3.254**

5. In the **Port** box, type: **8080**

6. Click on the checkbox next to “Use this proxy server for all protocols”.

7. Click on OK.



8. Click on OK again. You should now be able to access the web.